

# BEAVERS



## Designed for Gnawing

### Life beside Water

Beavers live beside rivers and lakes in woodland and they are very good swimmers. They dig tunnels in the river bank and then chop down trees with their strong front teeth, to build their homes. They eat plants.

Look at the list below and put a cross next to the one that a beaver does not have.



Webbed back feet.



Feathers.



Two fur coats.



A flat, scaly tail.



Strong front teeth.

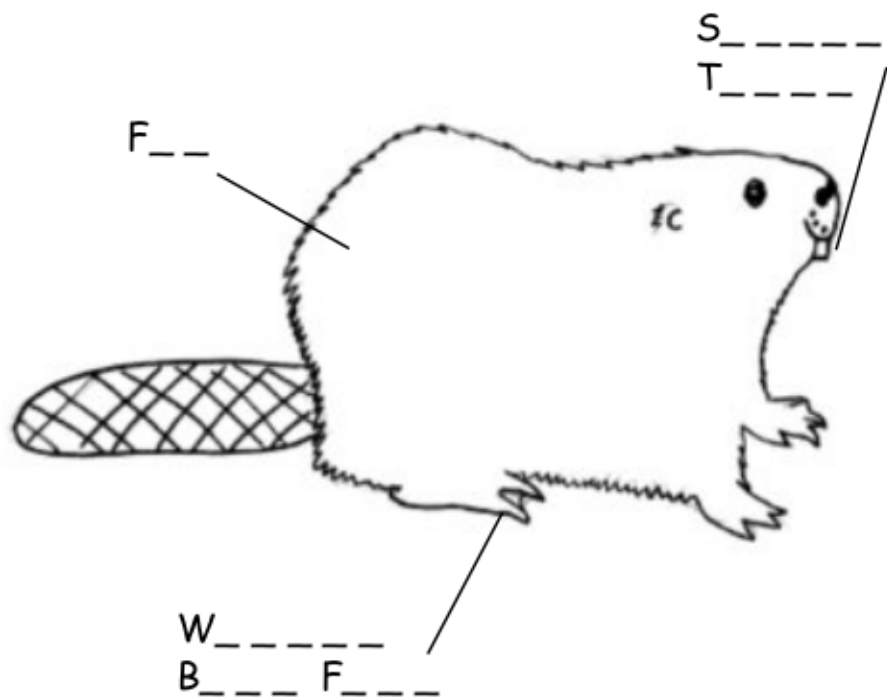


## Colour me in

Can you colour the beaver in and name three things that help it to chop down trees, swim well and keep warm

Look for

- Strong teeth
- Webbed back feet
- Fur



## Lunchtime!

Can you help the beaver decide what to eat for lunch?

Draw arrows to two things that the beaver would prefer to eat for lunch.

Leaves



Fish



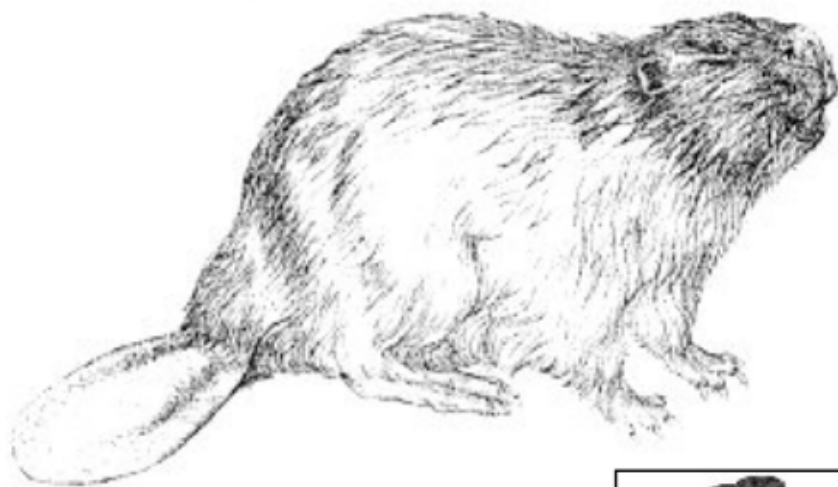
Bark



Worms



Frogs



### Looking at Beavers

Become a beaver detective and look for the signs that beavers leave behind.



Beavers gnaw down trees with their sharp teeth to make their home - we call this a lodge. Baby beavers would be born in here. We call them kits.



Tree stumps with beaver teeth marks. Look on the ground beneath them to find small pieces of wood called 'beaver chips'.



A beaver pawprint - you might see these in soft mud.



## Beaver Poem

Beaver

Edge of the lake

A home made from trees

Very busy animal

Eating bark and leaves

Ready to dive underwater



Can you complete this sentence?

Beavers are \_\_\_\_\_



## Are you a beaver expert?

(Put a circle around the correct answer)

1. What is a beaver's home called?

A den      A sett      A lodge



2. How many toes does a beaver have?

Three      Four      Five



3. What does a beaver like to eat?

Fish      Worms      Leaves



4. What are baby beavers called?

Kits      Puppies      Ducklings



## Odd One Out

Have a look at these beavers. One of them is different from the others. Put a circle around the odd one out.



Now colour them in!

